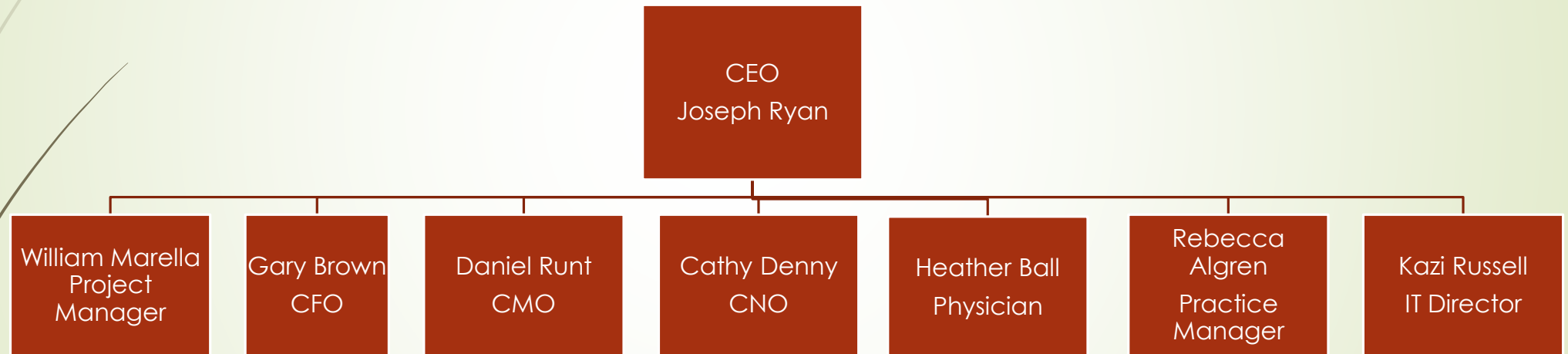




Statement of Work For Sunt Community Physicians

Between: Sunt Community Physicians
 and: Wildcat Software Solutions, LLC
Prepared by: Kazi Russell

Organization Staff Chart





Key Assumptions

- ▶ The SOW defines general requirements for the Sunt Laboratory Interface project. Requirements and expectations will be further defined in the request for proposal (RFP). The contractor must supply personnel in sufficient numbers and with sufficient time commitment to complete the project. Use of personnel from the hospital's IT department should be limited due to their commitments with organizational projects. The interface must be compatible and interoperable with all existing information technology assets at the hospital including but not limited to personal computers, servers, operating systems, and the business telecommunications network.



Scope of Work

- ▶ The Contractor will meet with the CIO or his designee to inventory the hospital's current IT assets in order to determine the most appropriate and compatible software solution. The Contractor will supply sufficient personnel for the project according to the stage of the project including assessment of needs and IT infrastructure, selection of software solution, installation of software solution, testing of software solution, and initial training. The Contractor will provide training of use of the system to designated hospital employees to include but not limited to laboratory IT manager, system analysts and database administrators. The hospital will provide personnel to evaluate the function and efficiency of the system to ensure that it meets organizational needs.